

## **The mounting system of panels made of mortars reinforced with glass fibre - for vented façades**

Architectural concrete panels have found use as façade and inner walls facings. The panels must be fixed to a stable, sturdy, and rigid surface. If such surface is not available, it should be reinforced with an OSB.

During the mounting, the panels may be machined with the use of tools suitable for concrete cutting.

Two mounting types are available: visible and invisible mounting.

It is based on aluminium substructure with a visible or invisible system. Both consist of a bearer - corbel or profile (L or T).

- a) visible
  - riveting (mounting regardless of climatic conditions)

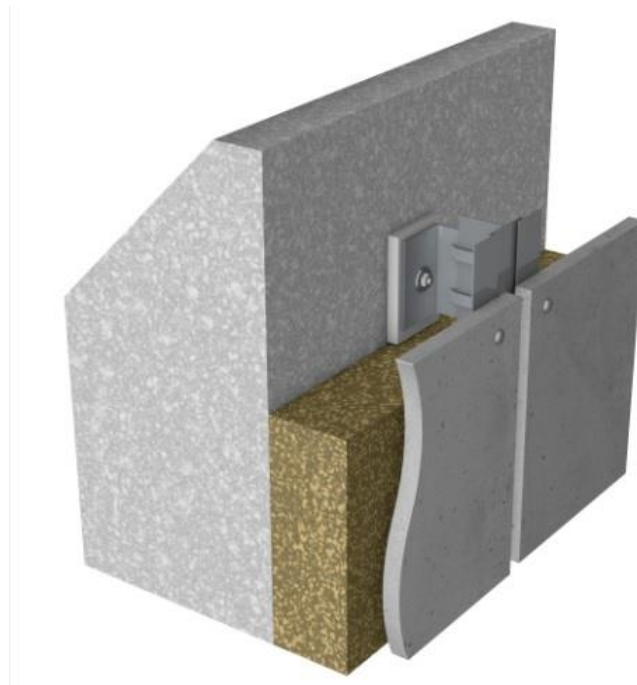


Figure 1. Invisible mounting system - riveting

b) invisible

- gluing (with polyurethane glue); additionally, adhesive tape is used - its role is to ensure temporary adhesiveness of the panel to profiles until the glue cures. Mounting possible only in convenient temperature and humidity

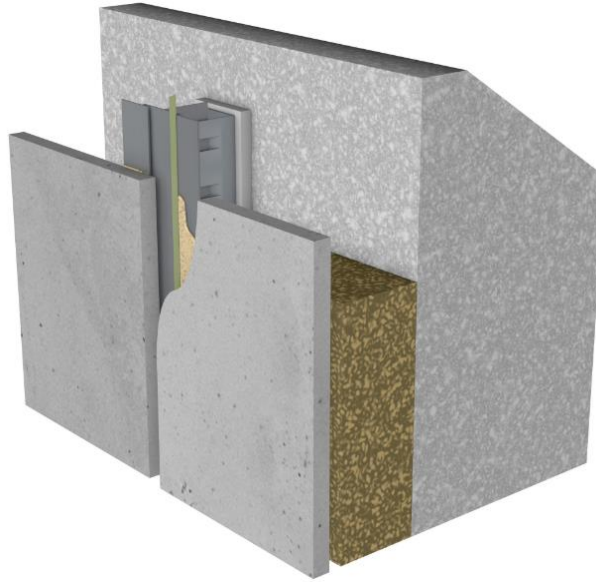


Figure 2. Invisible mounting system - gluing

- with the use of back-expanding sleeve (ensures high strength of connections immediately after mounting)

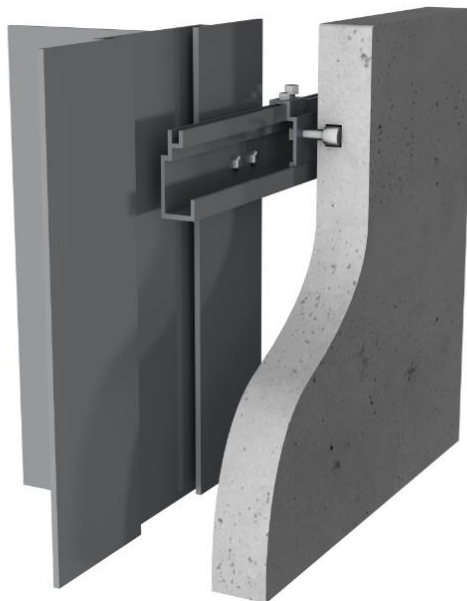


Figure 3. Invisible mounting system - with the use of a back-expanding sleeve